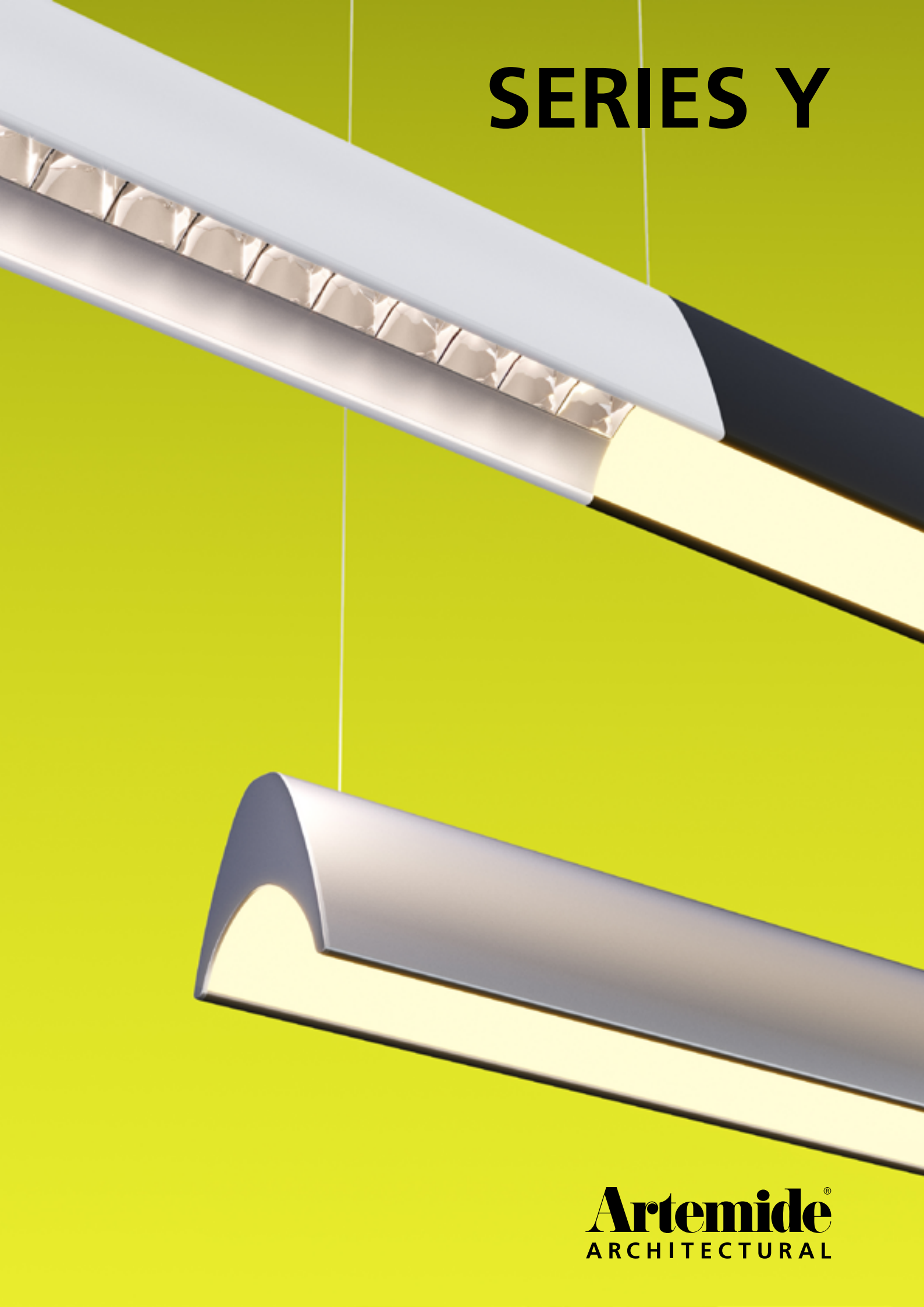


SERIES Y



Artemide[®]
ARCHITECTURAL



For further information on Series Y
visit artemide.com

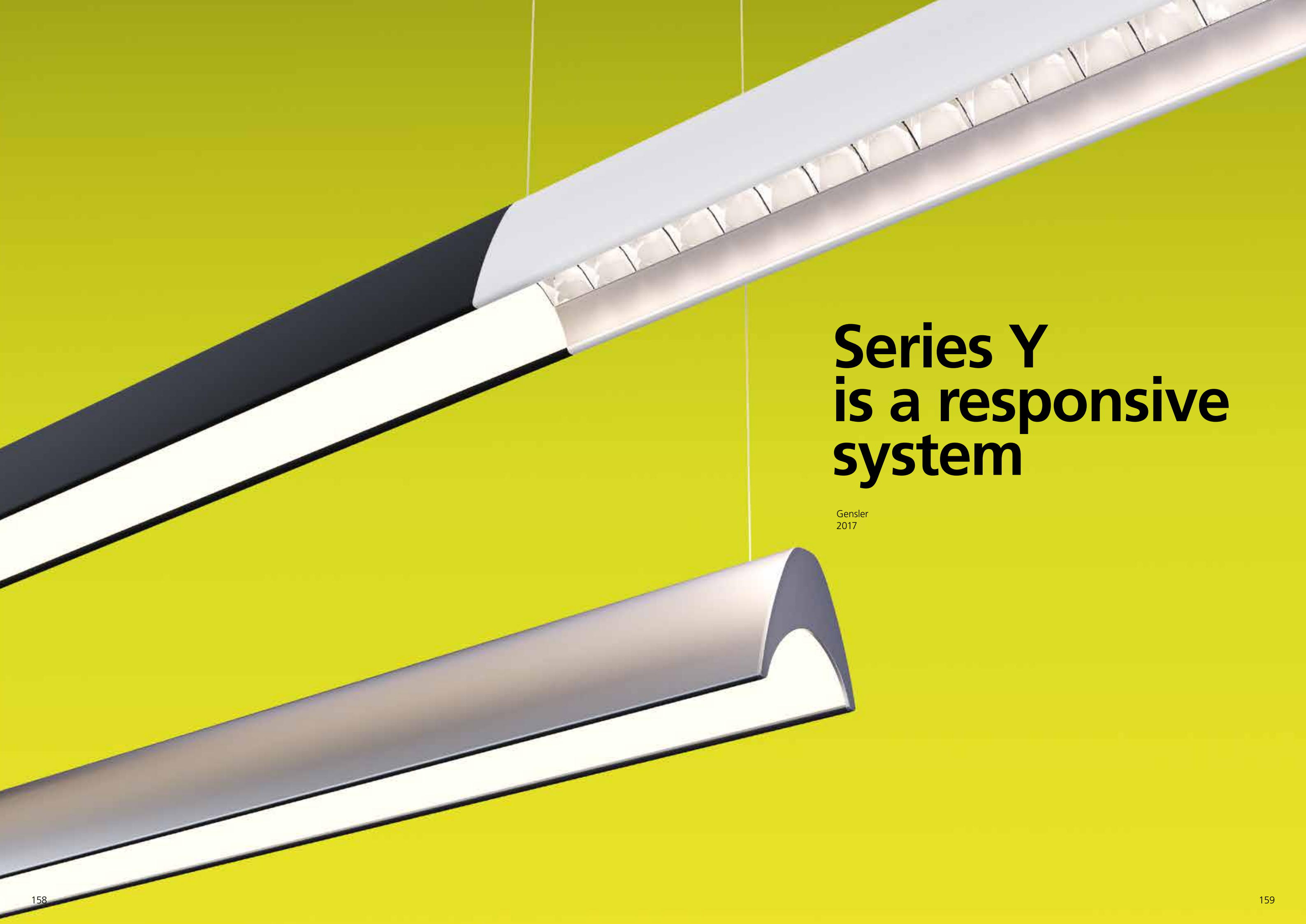
Series Y

“DIVORCE LIGHTING FROM THE CEILING.
Series Y creates a soft dialogue with the space it
illuminates. It is the intersection between complexity
and simplicity, functionality and aesthetic. It solves
real issues in the workplace like the needs of more
uneven compositions and unexpected, open or closed,
geometries”.

Gensler





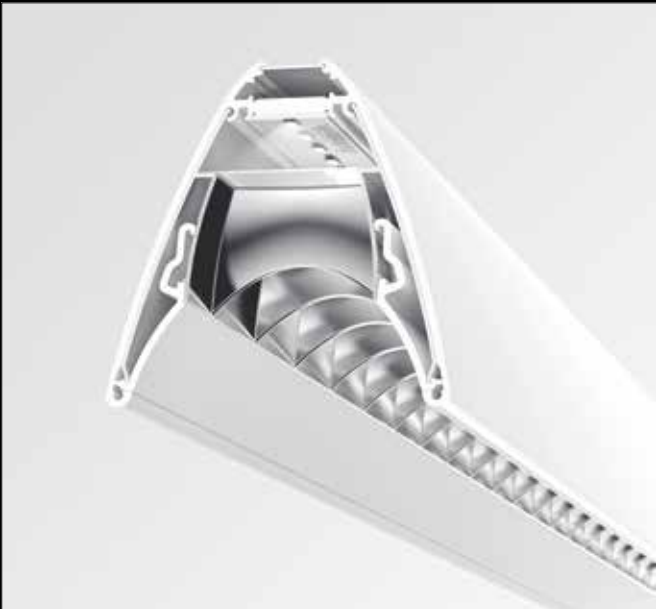


Series Y is a responsive system

Gensler
2017

Series Y optics

Direct emission



Diffused emission



37W
1845 lm
Undimmable

Controlled emission



37W
2143 lm
Undimmable

Direct + Indirect emission



Diffused + Batwing emission



55W
3621 lm
Dimmable DALI separately

Controlled + Batwing emission



55W
3919 lm
Dimmable DALI separately

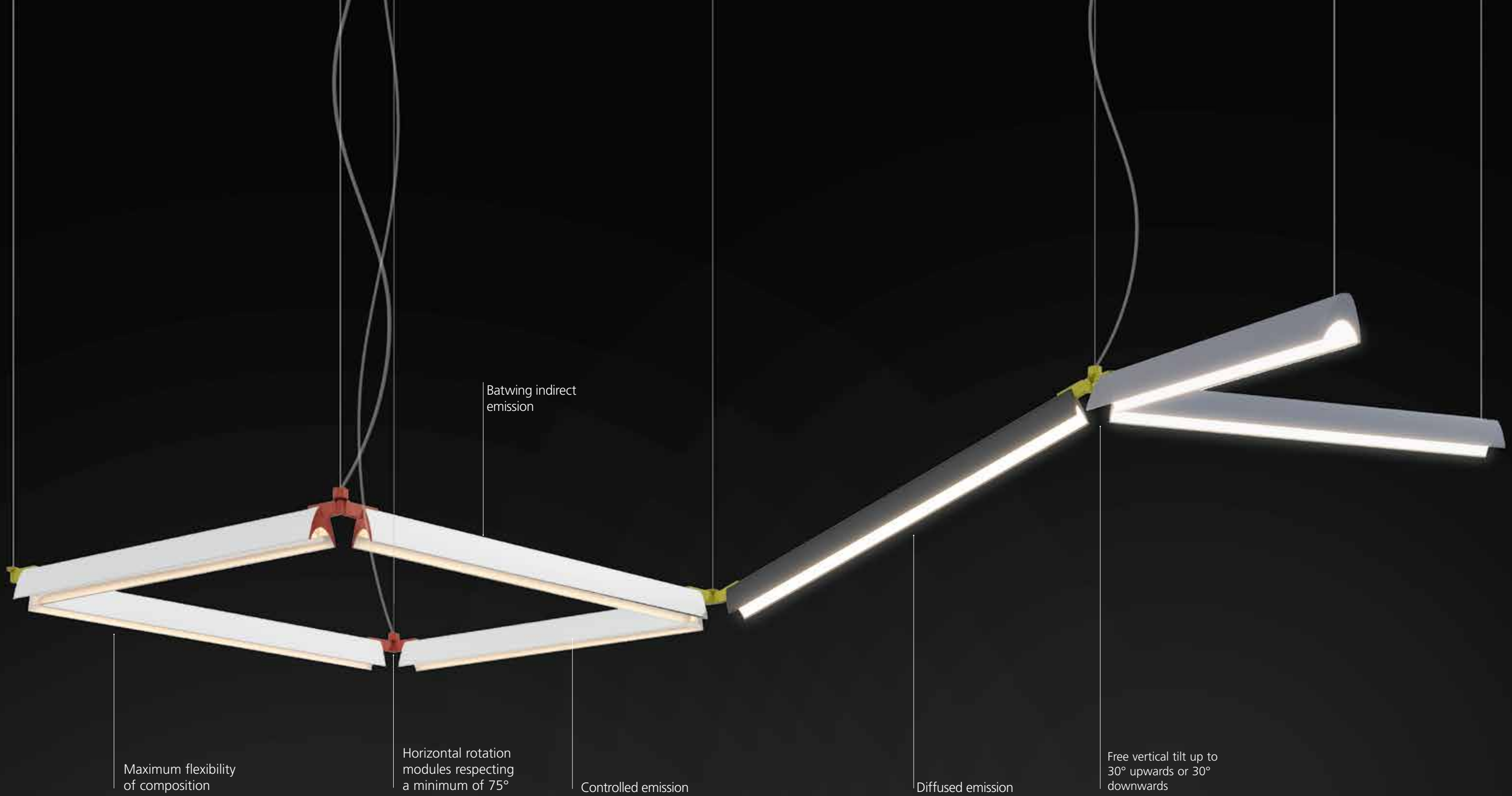


Series Y

color temperatures



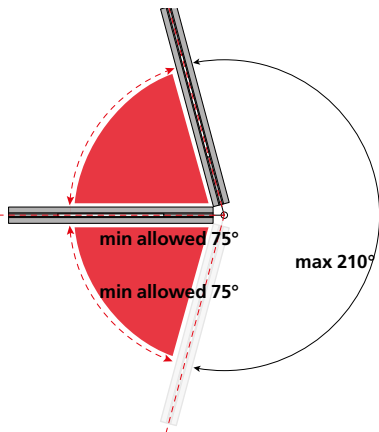
Fast delivery



Horizontal and vertical freedom to play with

Rotation on horizontal plane

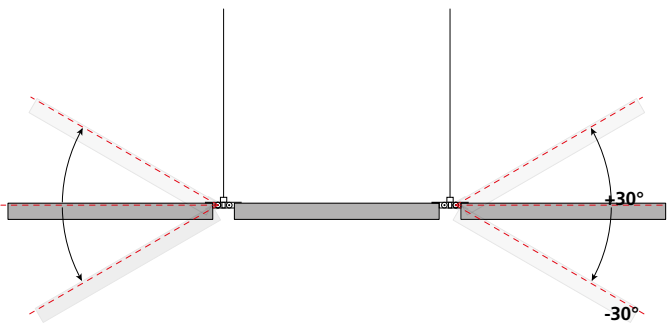
During the installation it is possible to freely choose the position of each single module, respecting a minimum angle between two modules of 75°.



Tilt on vertical plane

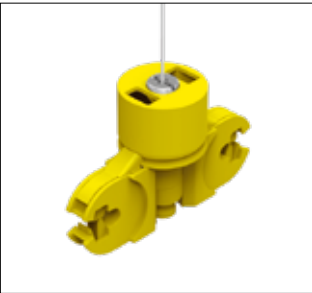
Each module can be easily tilted (upward or downward) up to 30° from the horizontal plane.

This two movements (rotation and tilting) can be mixed up in infinite possibilities to best adapt to space requirements.

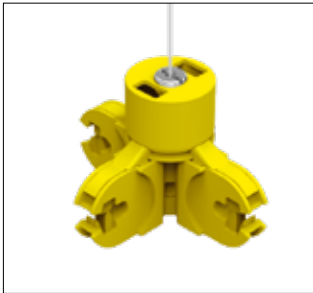


Possible multiple configurations up to 4 modules

Joint with cable



x 2 modules



x 3 modules



x 4 modules



Joint without cable



x 2 modules



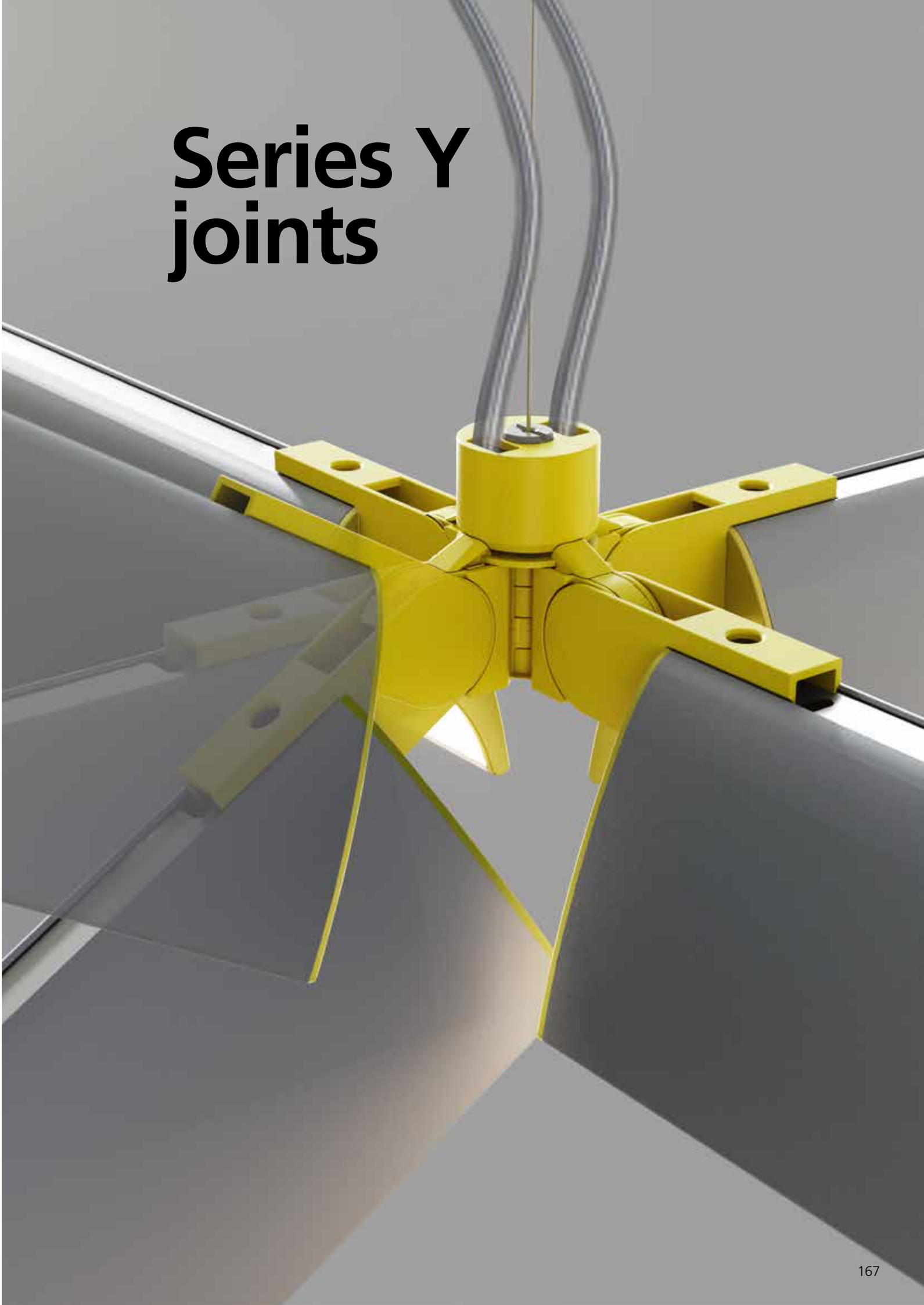
x 3 modules



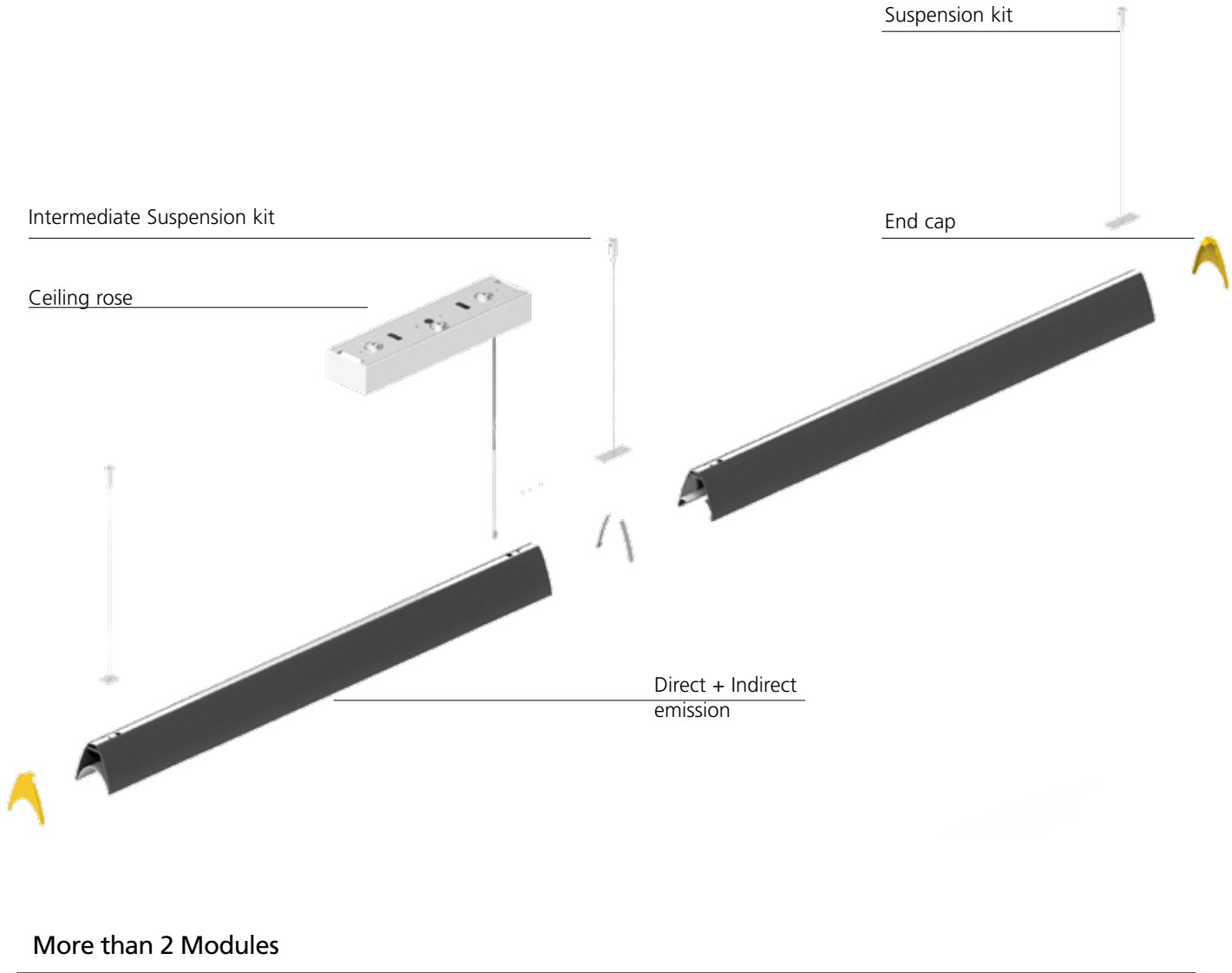
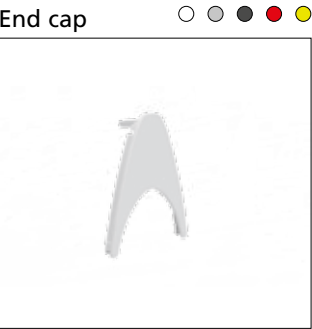
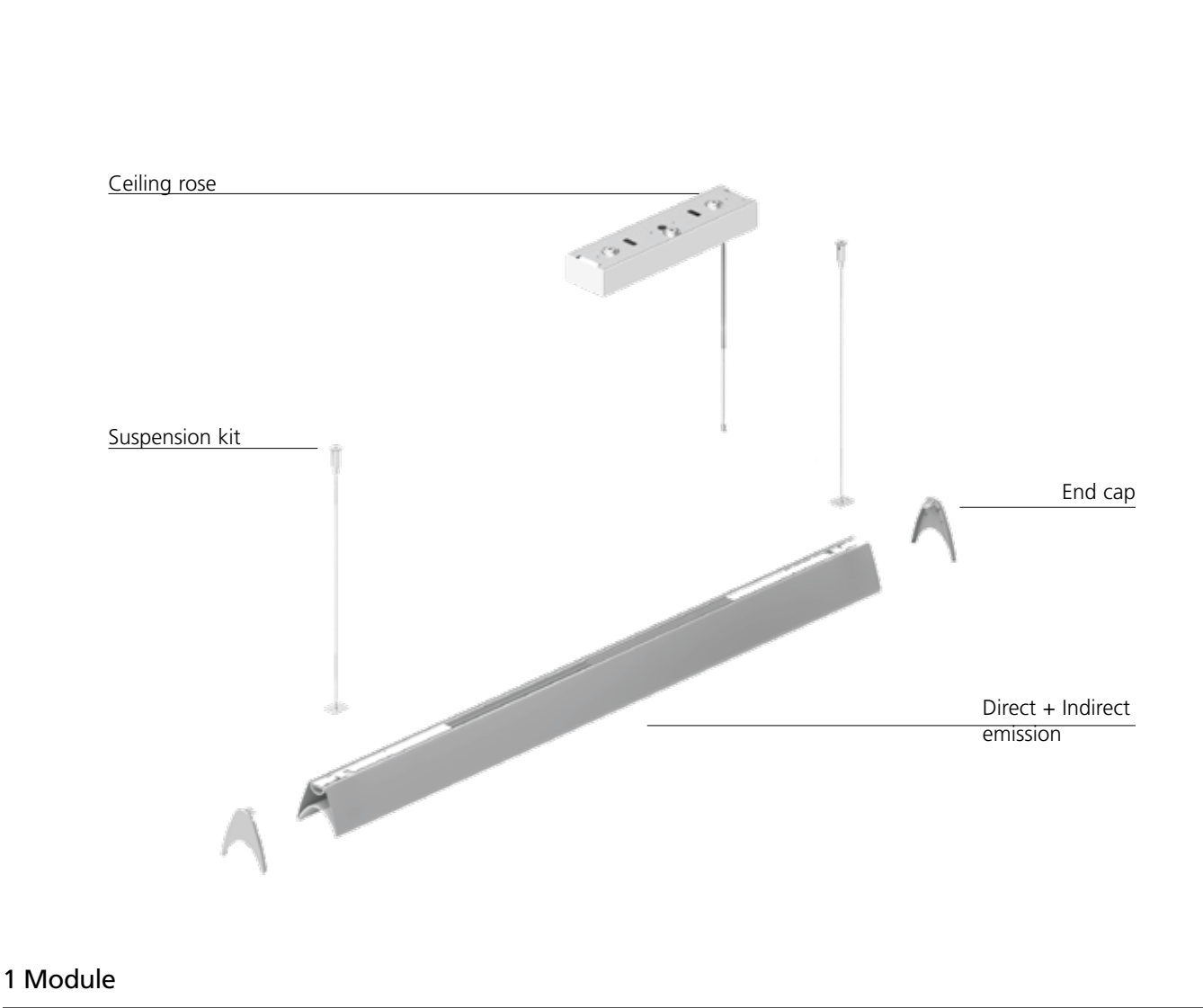
x 4 modules



Series Y joints



Series Y linear configuration

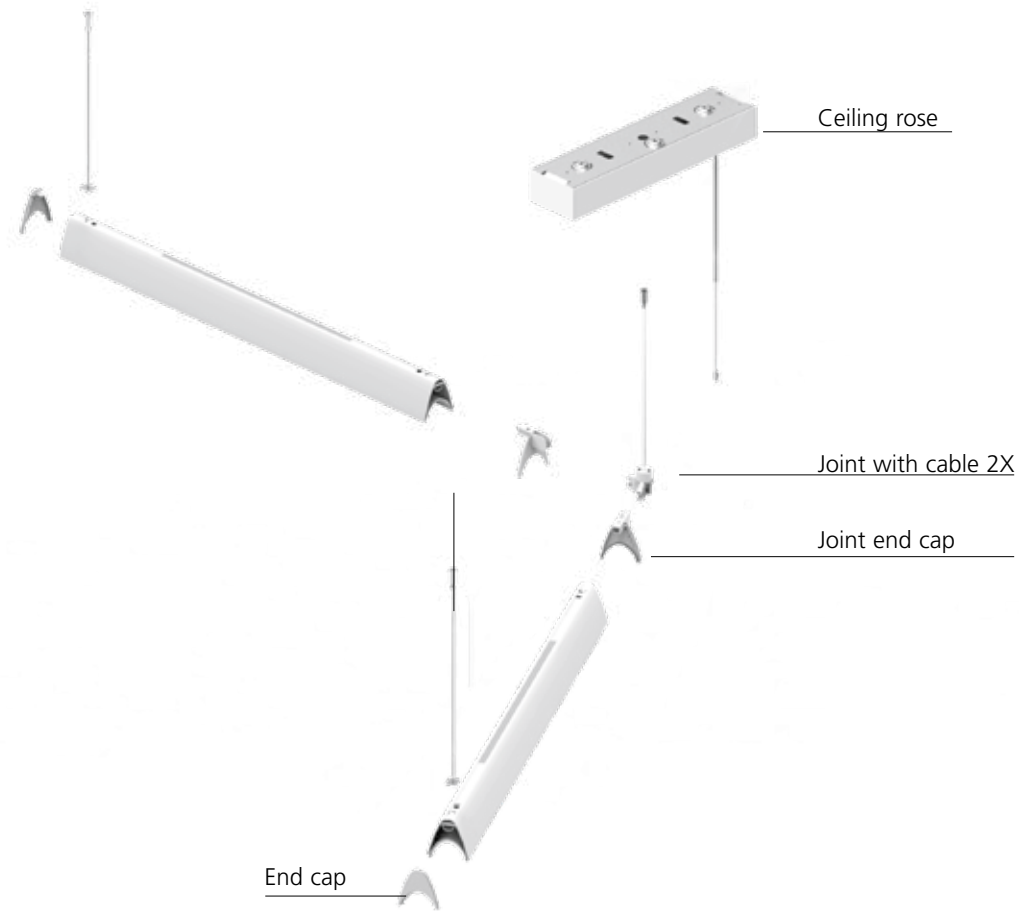


Small 416x99x65 mm
x2, x3, x4 modules
Undimmable
x2 modules
Dimmable DALI

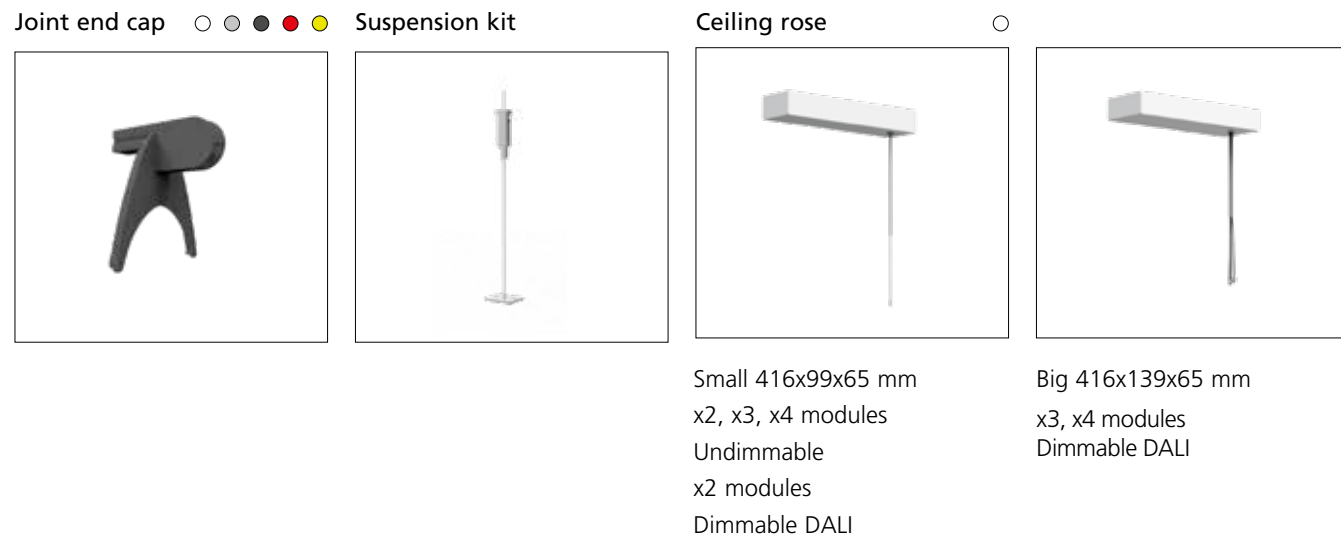


Big 416x139x65 mm
x3, x4 modules
Dimmable DALI

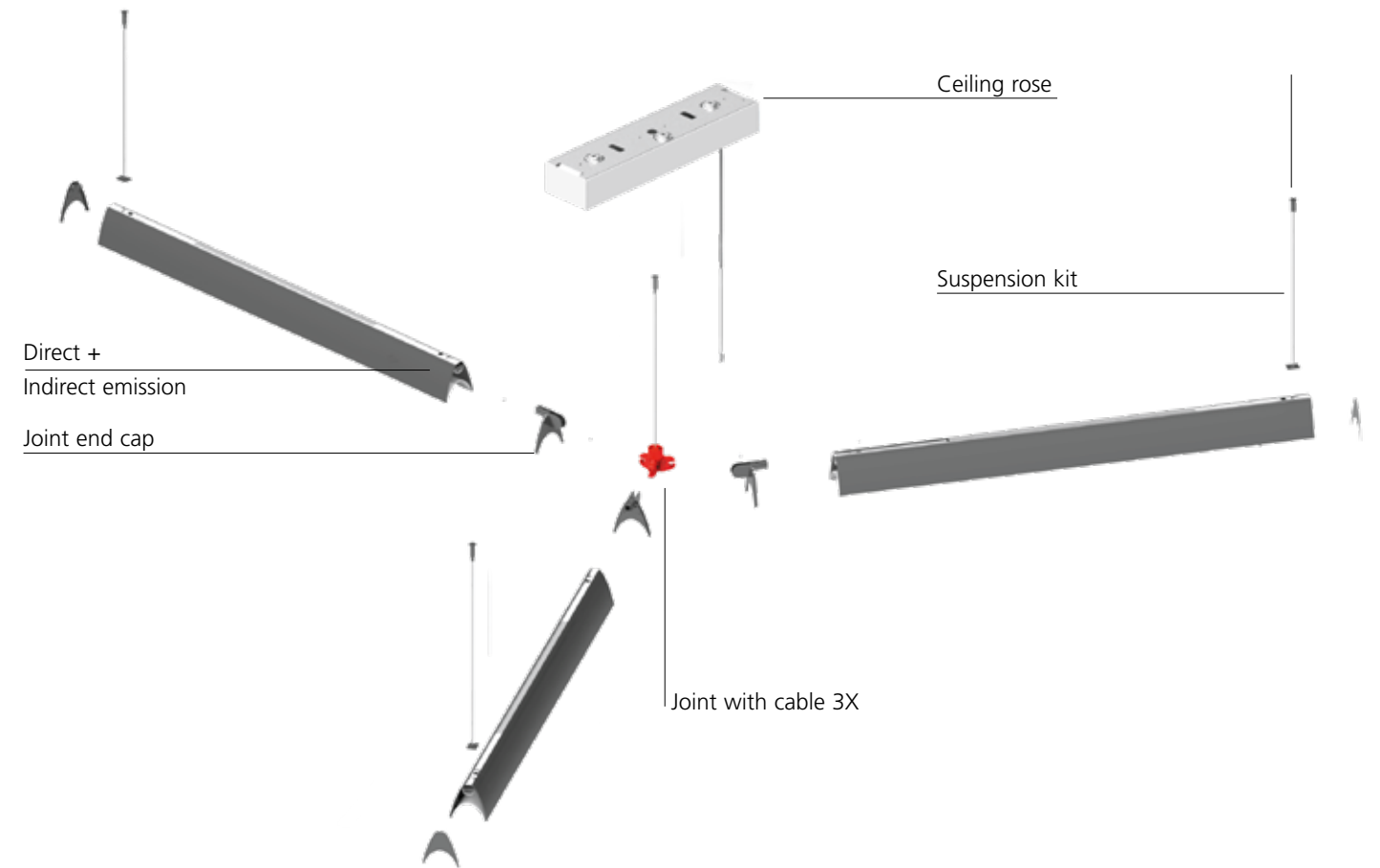
Series Y flexible configuration



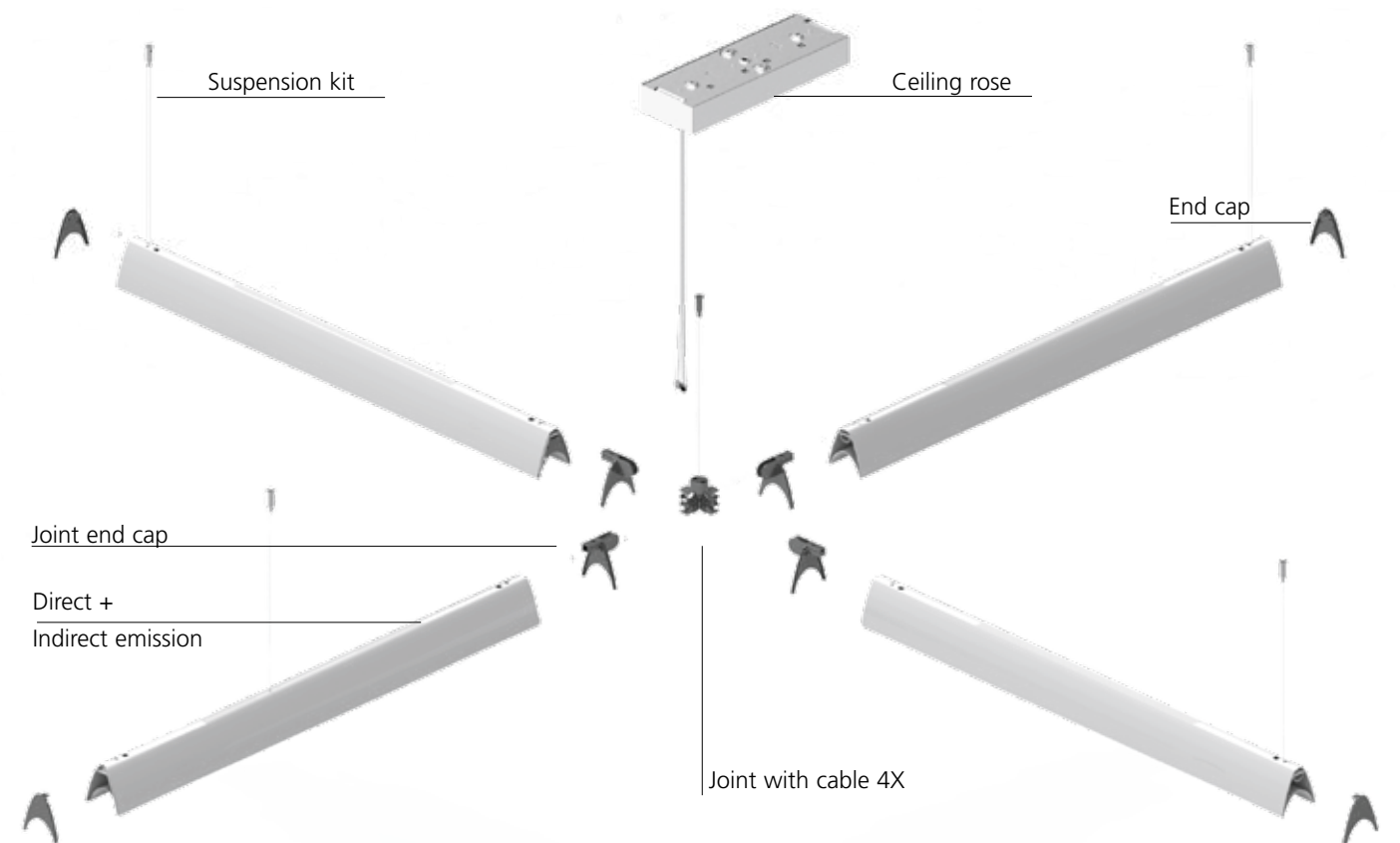
2 Modules



3 Modules



4 Modules



Series Y

White

Black

Silver

01

04

05

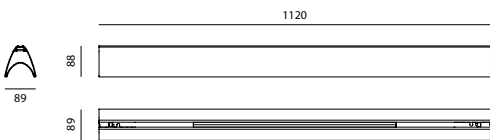
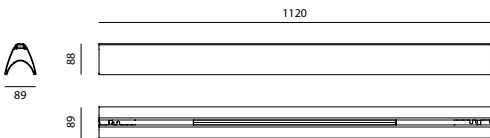
IP20

Diffused direct emission					Undimmable
Length	W	CRI	Flux	CCT	Code
1120mm	36 W	90	2537lm	3000K	AY000. 01/04/05
			2670lm	4000K	AY005. 01/04/05

Diffused direct emission + batwing indirect emission					Dimmable DALI
Length	W	CRI	Flux	CCT	Code
1120mm	55 W	90	4124lm	3000K	AY050. 01/04/05
			4341lm	4000K	AY055. 01/04/05

Controlled direct emission					Undimmable
Length	W	CRI	Flux	CCT	Code
1120mm	36 W	90	2376lm	3000K	AY010. 01/04/05
			2502lm	4000K	AY015. 01/04/05

Controlled direct emission + batwing indirect emission					Dimmable DALI
Length	W	CRI	Flux	CCT	Code
1120mm	55 W	90	3962lm	3000K	AY060. 01/04/05
			4170lm	4000K	AY065. 01/04/05



White

Black

Silver

Red

Yellow

01

04

05

08

15

Accessories		
	Suspension Kit	Code AY50000
	Intermediate Suspension Kit	AY51000
	End cap	AY600. 01/04 05/08/15
	Joint End cap	AY610. 01/04 05/08/15

Joint with cable		
	x 2 modules	Code AY700 01/04 05/08/15
	x 3 modules	AY710 01/04 05/08/15
	x 4 modules	AY720 01/04 05/08/15

Joint without cable		
	x 2 modules	Code AY730 01/04 05/08/15
	x 3 modules	AY740 01/04 AY750 05/08/15
	x 4 modules	AY760 01/04 05/08/15

Series Y

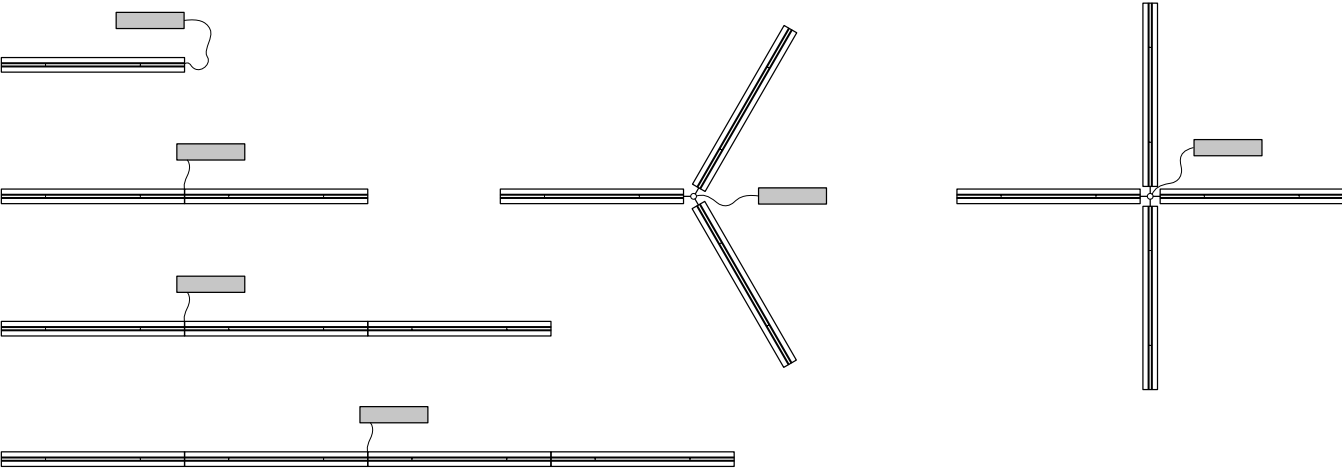
White

01

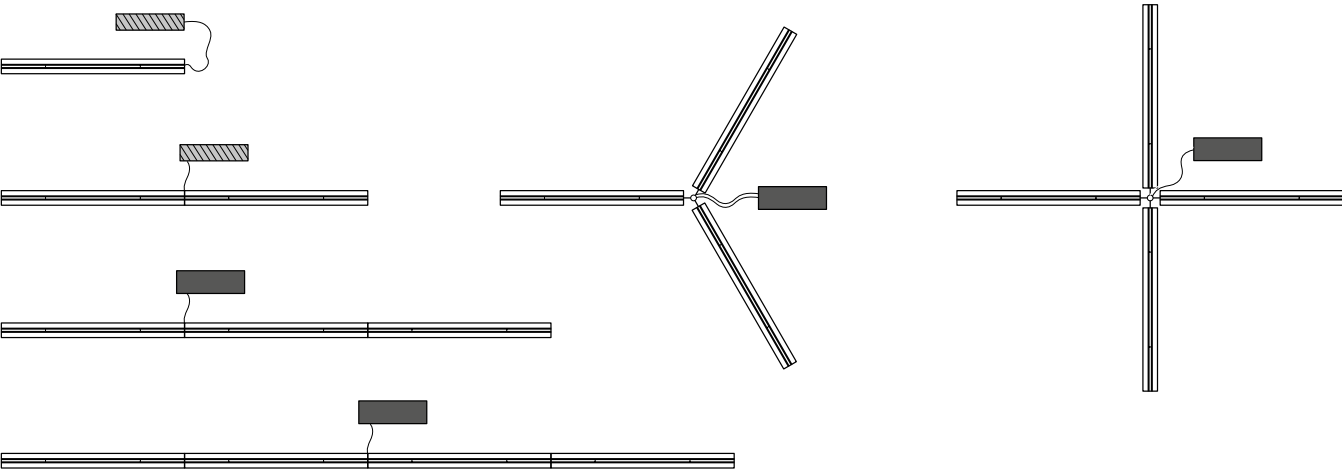
IP20

Ceiling rose	Undimmable	Dimmable DALI
	Code	Code
Rose x 1 module	AY80101	AY81101
Rose x 2 modules	AY80201	AY81201
Rose x 3 modules - linear configuration	AY80301	AY81301
Rose x 3 modules - joint configuration	AY80401	AY81401
Rose x 4 modules - linear configuration	AY80501	AY81501
Rose x 4 modules - joint configuration	AY80601	AY81601

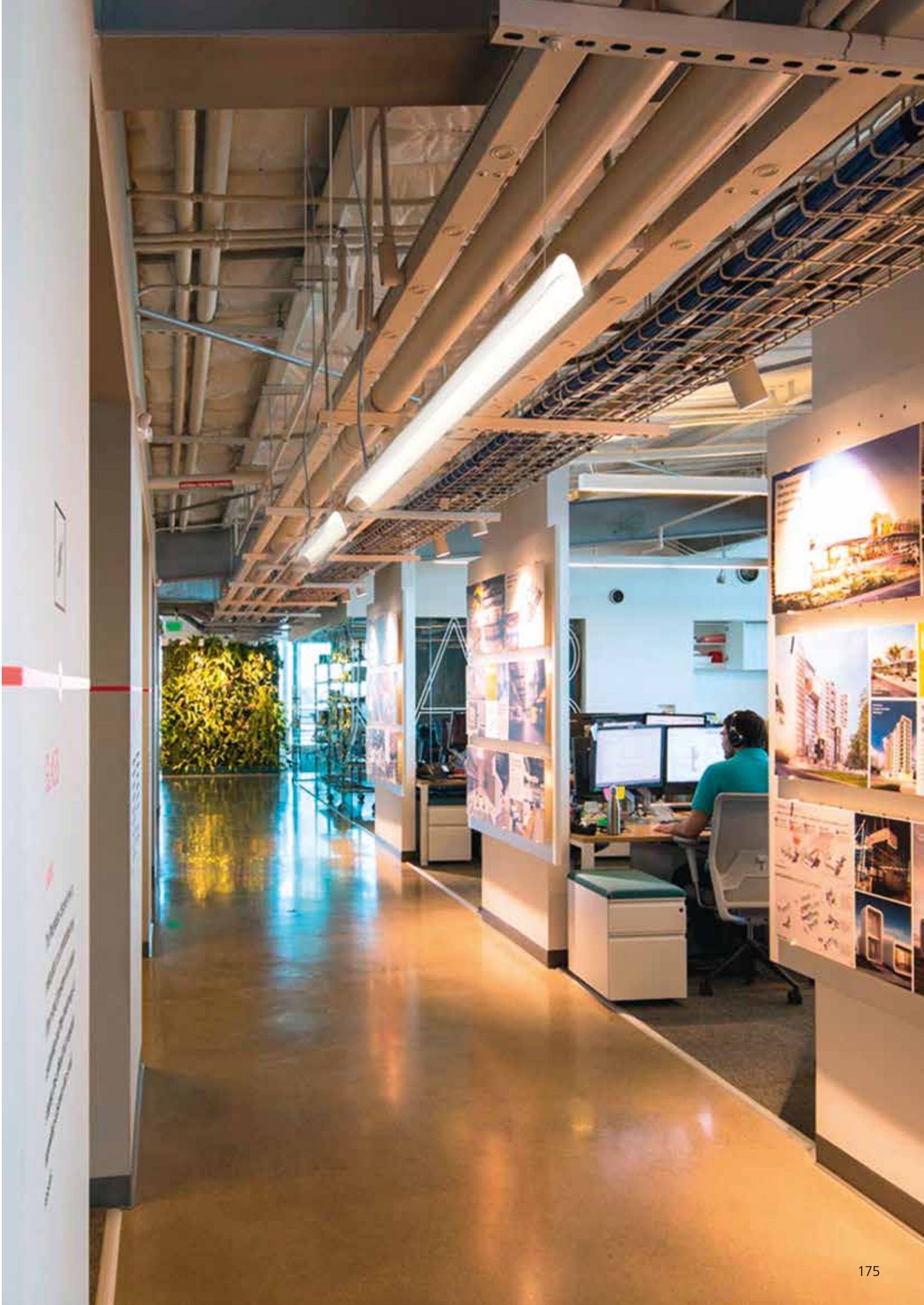
Undimmable rose
Ceiling rose suitable for all undimmable modules configurations.
In case of 2 or more modules configurations, the power cable must be connected to the joint / between the modules.



Dimmable rose
Ceiling rose suitable for max 2 dimmable modules configurations.



Dimmable rose
Ceiling rose suitable for 3 or 4 dimmable modules configurations.
In case of 2 or more modules configurations, the power cable must be connected to the joint / between the modules.



Headquarters

Artemide S.p.A.
Via Bergamo, 18
20010 Pregnana Milanese (MI), Italy
Tel. +39 02 93518.1
Tel. +39 02 93526.1
Numero verde 800 834 093
(from Italy only)
info@artemide.com
artemide.com

Communication and Marketing
Department

Via Canova, 34
20145 Milan (MI), Italy
Tel. +39 02 349611
communication@artemide.com
artemide.com

For information regarding distributors and
points of sale, please visit artemide.com
or email: info@artemide.com

Artemide S.p.A.
si riserva la facoltà di modificare, in qualunque
momento e senza preavviso, le caratteristiche
tecniche degli elementi illustrati nel presente
catalogo.

Artemide S.p.A.
reserves the right to change, at any time and
without prior warning, the technical specifications
of any product illustrated in this catalogue.

Artemide S.p.A.
se réserve le droit de modifier, à n'importe
quel moment et sans préavis, les caractéristiques
techniques des éléments illustrés dans ce
catalogue.

Artemide S.p.A.
behält sich das Recht vor jederzeit und ohne
Ankündigung die technischen Daten der im
Katalog abgebildeten Produkte zu ändern.

Artemide S.p.A.
se reserva la facultad de modificar, en cualquier
y sin aviso previo, las características técnicas
de los elementos ilustrados en el presente
catálogo.



